



OVERVIEW

LOCATION

Sarasota County

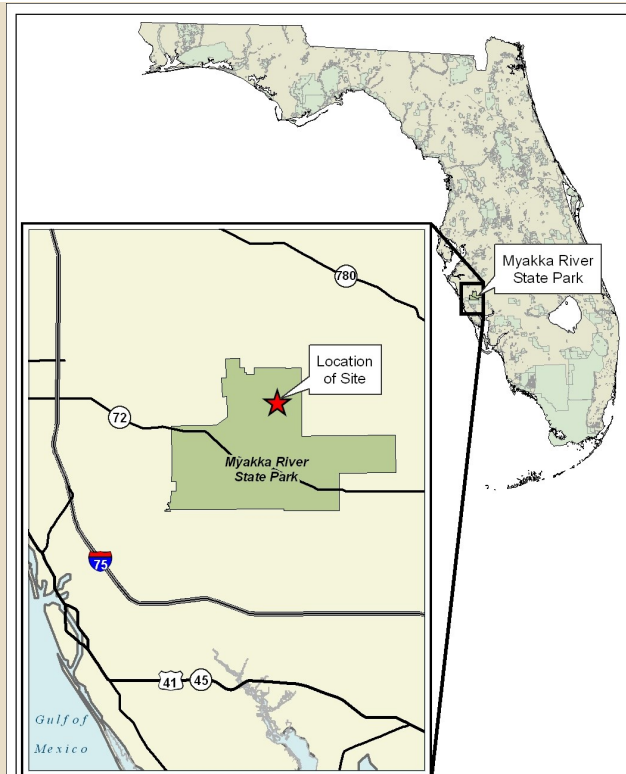
Latitude 27° 15' 44.5" N

Longitude 82° 15' 25.4" W

COMMUNITY DESCRIPTION

Myakka River State Park lies on the De Soto Slope in the Southwestern Flatwoods District, a broad plain characterized by prairies, flatwoods, and swamps. Extensive dry prairie in good condition occurs within the Park. The reference site for dry prairie lies east of Lake Myakka in a large prairie matrix with embedded flatwoods and depression marshes.

There are no trees in the reference dry prairie. The



shrub cover is approximately 40 percent and generally less than 2 feet tall. Dominant shrubs are saw palmetto (*Serenoa repens*), and dwarf live oak (*Quercus minima*). Other common shrubs, but relatively low in cover are Atlantic St. John's wort (*Hypericum reductum*), fourpetal St. John's wort (*Hypericum tetrapetalum*), gallberry (*Ilex glabra*), coastalplain staggerbush (*Lyonia fruticosa*), fetterbush (*Lyonia lucida*), wax myrtle (*Myrica cerifera*), runner oak (*Quercus elliotii*), and shiny blueberry (*Vaccinium myrsinites*). Herbaceous cover is diverse and moderately dense (around 25%), represented primarily by wiregrass (*Aristida stricta* var. *beyrichiana*). Other common herbs, but generally less than 2 percent cover include little bluestem (*Schizachyrium scoparium*), savannah yellow-eyed grass (*Xyris flabelliformis*), yellow hatpins (*Syngonanthus flavidulus*), lopsided indiangrass (*Sorghastrum secundum*), netted nutrush (*Scleria reticularis*), whitetop aster (*Oclemena reticulata*), narrowleaf silkgrass (*Pityopsis graminifolia*), whitehead bogbutton (*Lachnocaulon anceps*), blackroot (*Pterocaulon pycnostachyum*), tall elephantsfoot (*Elephantopus elatus*), dwarf sundew (*Drosera brevifolia*), Nuttall's meadowbeauty (*Rhexia nuttallii*) bottlebrush threeawn (*Aristida spiciformis*), vanillaleaf (*Carphephorus odoratissimus*), humped bladderwort (*Utricularia gibba*), yellow-eyed grass (*Xyris* sp.), and nutsedges (*Rhynchospora* spp.).

This reference site for dry prairie has received light roller chopping to reduce the saw palmetto cover. Care was taken to prevent soil disturbance and as a result only a few weedy herbs, such as slender flattop goldenrod (*Euthamia caroliniana*) and broomsedge bluestem (*Andropogon virginicus*), are present. The area burned during the summer of 2007 stimulating the fruiting of wiregrass and other herbs. Data were originally collected at this site during February 2009. and a second data set was collected during November 2015.

After further consultation with the park biologist, FNAI may consider replacing this reference area with another Myakka site in the future.

Date of Last Burn

May 2013

Notable Species Management Considerations

The structure and composition of this reference site is within recommended guidelines for gopher tortoise (*Gopherus polyphemus*). See the Florida Fish and Wildlife Conservation Commission's *Florida Wildlife Conservation Guide*:

<http://myfwc.com/media/2286685/GT-Management-Plan.pdf>.

STATISTICAL SUMMARY

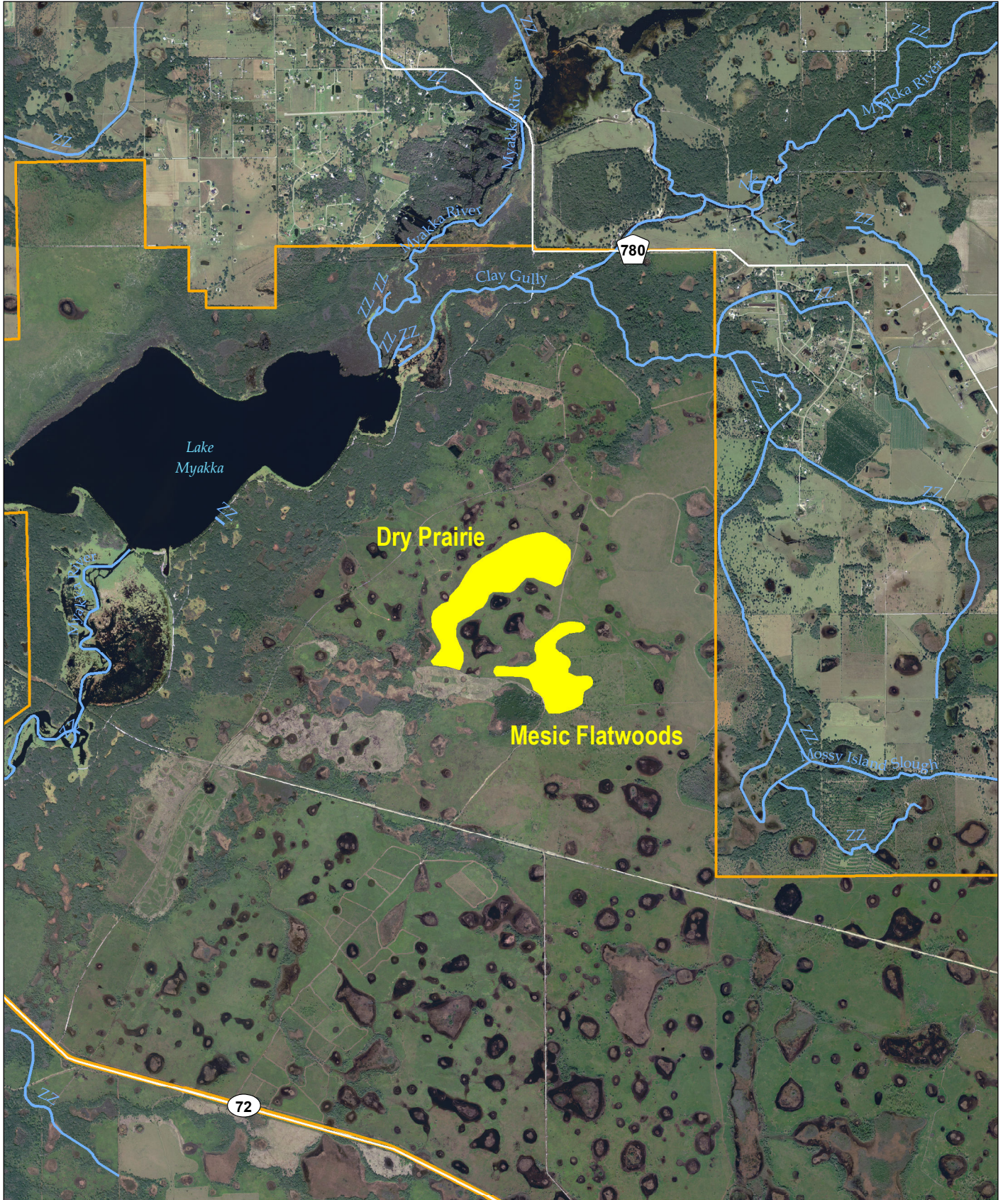
Metric	2009 Average Reference Site Value	2015 Average Reference Site Value	Recommended Range for Dry Prairie
Basal Area of Pine (sq ft per acre)	0	0	0
Pine Regeneration (stems within 7 m radius)	0	0.2	0
Bare Ground (%)	7.5	0.8	1-10
Herb Cover (%)	14.1	27.0	>20
Wiry Graminoid Cover (%)	8.9	7.8	>15
Exotic Plant Cover (%)	0	0	0
Weedy Species Cover (%)	1.2	0	<2
Average Maximum Serenoa Height (ft)	2.1	1.8	<1.5
Serenoa Cover (%)	17.0	14.6	5-20
Serenoa Petiole Density >3 ft	0	0	0
Average Maximum Shrub Height (ft)	2.1	2.3	<2
Shrub Cover (%)	29.3	16.6	5-30
Shrub Stem Density >3 ft	0.7	2.1	0
Maximum Shrub DBH (in)	0	0	0
Non-Pine Stem Density (stems within 7 m radius)	0	0	0
Subcanopy (average stems per quadrat)	0	0	0

The Reference Natural Community project, including the identification and quantification of high quality reference sites comprising geographical and plant community variations of ten actively managed natural community types, is funded by the Florida Fish and Wildlife Conservation Commission.

For more information, contact:



Florida Natural Areas Inventory
1018 Thomasville Road, Suite 200-C
Tallahassee, Florida 32303
(850) 224-8207
www.fnai.org





**Location Map - Dry Prairie
Myakka River State Park**

Latitude 27.262737 Longitude -82.258091
Sarasota County, Florida

-  Reference Area
-  Myakka River State Park

0 0.25 0.5 1 1.5 2 Miles

